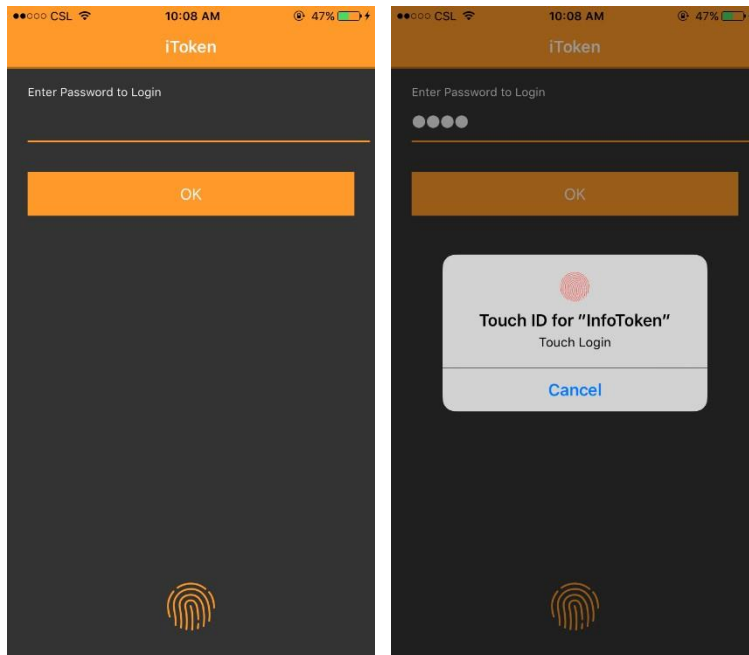
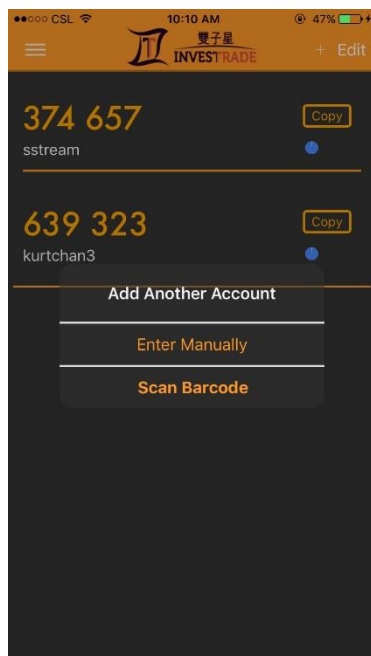


iToken

1. 客戶可於 Apple Apps Store 及 Google Play Store 搜尋關鍵字“北京首通”後找到並下載北京首通編碼器。
2. 客戶可選擇以指紋或密碼登入。

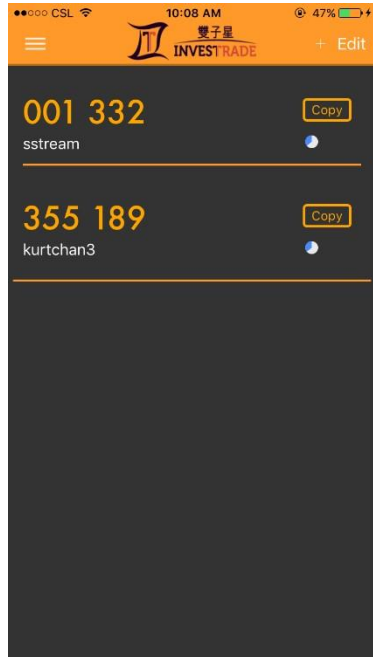


3. 客戶可掃描 QR Code 或點選“+”按鍵後新增帳戶。



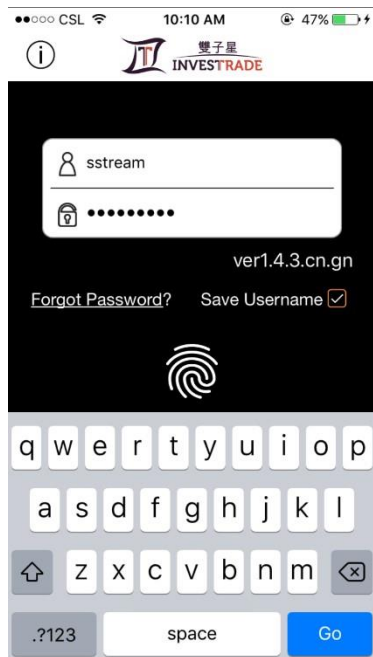
4. 當客戶新增帳戶後，一次性密碼會每 30 秒更新一次並會於最後顯示的 10 秒顯示為紅色作出提示。

5. 點選複製一次性密碼，或於網上交易系統連結到編碼程式上的二次登入。

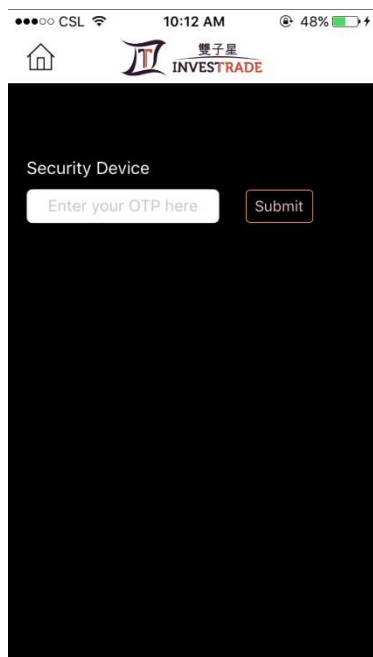


手機程式登入

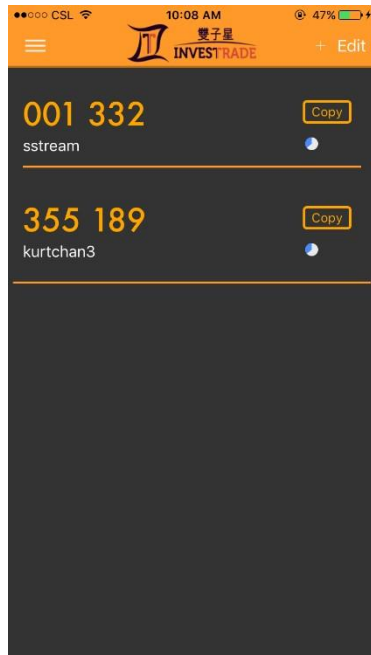
1. 請客戶使用開戶時的客戶編號及密碼(此密碼為二次登入認證中的第一層密碼-即開戶時及重設密碼時的密碼)或使用指紋登入。



2. 客戶登入後(此為第一層密碼)，交易程式會自動開動北京首通證券編碼器程式。



3. 客戶點選複製後,會將第二層密碼複製,客戶返回交易程式後可將密碼貼上並確定。




4. 客戶成功登入手機交易程式後客戶閱讀並確認免責聲明後便會進入交易畫面。



網上交易系統登入

1. 請客戶於網上交易系統首頁輸入密碼(此密碼為二次登入認證中的第一層密碼-即開戶時及重設密碼時的密碼)。

cast.hk/cas/login?locale=en_US



家 | 園

Login

astream

Forgot Password


Submit

Please protect your account/password and do not distribute to 3rd party
Please logout the system after use

©Infocast Limited All rights reserved.

2. 當客戶於首頁登入後便會進入二次登入密碼登入頁面。

ist.hk/cas/login?locale=en_US



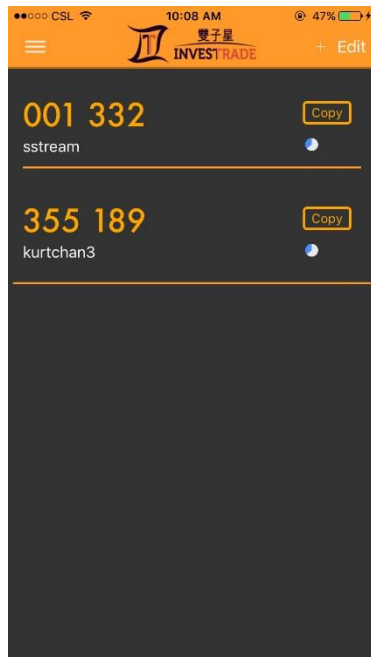
Security Device

Submit

Please protect your account/password and do not distribute to 3rd party
Please logout the system after use

©Infocast Limited All rights reserved.

3. 請客戶於手機上開啟“北京首通證券編碼器”並將編碼器顯示之密碼(此為二次認證中的第二層密碼)輸入到網上交易系統中的二次登入密碼登入頁面。



4. 完成以動作後便可成功登入交易系統，客戶閱讀並確認免責聲明後便會進入交易畫面。

emo2.infocast.hk/iweb/service/trading/home?locale=en_US

astream,
Your Last Login: 18/01/2018 12:23 PM Sign Out

Market Information Trade My Setting Cash Instruction IPO

Choose A/C: 0010100999

Balances Portfolio Orders

Consolidated(HKD)

Avail. Cash Bal. \$100,000,000.00
Avail. Margin Val. \$0.00
Investment Power \$100,000,000.00
Loan Limit \$10,000,000.00

Last Updated 18/01/2018 12:25 PM HKT

Stock Trading

Buy Sell

Buy/Sell: Buy/Sell
Market: SEHK
Stock Code: [] Get Quote
Order Price: 0.000
Order Qty: 0
Order Type: Enhanced Limit Order
Order Term: Good for today

Clear Preview

SEHK
HSI 32,021.73 ↑38.32(0.12%) T/O 115.77B HSI SPOT9 ↑64(0.20%) Disc Int O/I 158.678 >>

Stock 00002
00002 中電控股

High	Low	Open	Priv Cls	Nominal	Change \$	Change %	Fluct %	Volume	Turnover	Spread	Lot Size	Currency	P/E	Yield %	52W High	52W Low	MA 10	RSI 9	Premium %	Gearing	ConvRatio	Break/Even Point	ExDate
78.700	78.400	78.400	78.600	78.700	0.100	+0.127%	0.383%	1.04M	81.36M	0.050/0.050	500	HKD	15.642	3.558%	85.500	74.400	79.095	35.320					

Bid	Ask	Broker ID	Broker	CAS	VCM
78.650	78.700				

684K 195K

2K (3) 13.5K (12)
8K (6) 6K (2)
63K (13) 28.5K (10)
169K (77) 1K (1)
39K (21) 3.5K (2)
224K (93) 12K (2)
29.5K (11) 61K (11)
55.5K (28) 11K (1)
20.5K (14) 34.5K (5)
74.5K (36) 24K (2)

Last Transaction

Code	GO	Change(%)	Bid(\$)	Ask(\$)	Day High(\$)	Day Low(\$)	Turnover	Volume
Nominal(\$)	Buy Sell Chart							

infocast Stock Information Provided by Infocast Limited [Disclaimer]

© Infocast Limited All rights reserved.